



## ELECTRICAL COMPONENTS

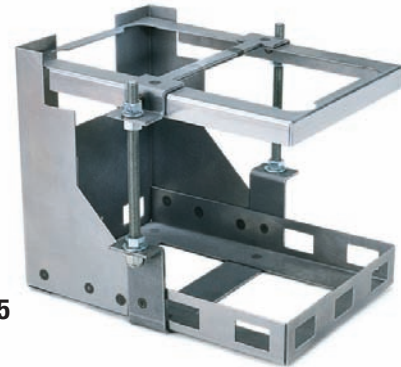
Wiring a race car is as important as plumbing the fuel system. Care should be taken to use the correct type and gauge of wire as well as the proper size fuses. Electrical connections should be soldered whenever possible and supported throughout the harness with tie wraps. Never allow the connector to support the weight of the wire.

Competition Engineering's battery installation equipment, high quality switches and switch panels are designed to withstand the rigors of racing. Their unsurpassed durability and functionality ensure that your race car's electrical system provides maximum performance.

### WELD-IN BATTERY TRAY

*Perfect battery retention for the racer or street rodder*

- Fabricated in-house on computer controlled machinery
- Outer shell constructed from 16 gauge mild steel shell with 1/8" mandrel formed upper and lower retaining straps
- Improved design provides better fit
- Fits 12 volt "Series 24" or 16 volt Turbo Start™ batteries
- Can be bolted or welded to frame rail
- Unpainted for ease of welding
- Legal for trunk mount in cars with rear firewall
- 3/8" steel hold down rods and hardware meet sanctioning body requirements for battery retention
- Inside dimensions: 10-1/2" long x 7-1/8" wide x 8-3/8" high



No. C4125

PART #	DESCRIPTION
C4125	Weld-In Battery Tray

COMPETITION ENGINEERING

Airtight lid is sealed with closed-cell foam gasket to prevent battery gasses from entering the vehicle

Injection molded polyethylene resists battery acid

Convenient quick-lock fasteners accessed from top, eliminating the need to reach under in tight spaces to secure nut

3/8" steel hold-down rods keep battery secure during severe racing conditions

Vent tube carries battery gasses outside of vehicle

Includes all mounting hardware, rubber cable clamps and grommets



### SEALED BATTERY BOX

*All the same features of our original Sealed Battery Box, at a more competitive price*

- Ideal for relocating a battery to the rear of any race, street or show vehicle with or without a rear firewall
- Holds a Series 24 battery with either top-post or side-post terminals
- Outside Dimensions: 13-1/8" W, 11-1/8" D, 11-1/8" T
- Fully accepted for racing by NHRA, IHRA and SCCA
- Does not include battery cable; use with Moroso Battery Cable Kit No. 74055

PART #	DESCRIPTION
74051	Sealed Battery Box, Black

### BATTERY/WEIGHT BOX

- Bolts together for easy installation
- Holes provided for battery cables
- Includes 3/8" hold down rod and grommets
- Meets sanctioning body requirements for weight box and battery containment in cars with rear firewall
- Inside dimensions: 12-3/8" long x 9-3/4" wide x 10" high
- Bottom flange for secure attachment
- Constructed from 1/8" thick mild steel
- Fits "Series 24" batteries

No. C4029



PART #	DESCRIPTION
C4029*	Battery/Weight Box <i>*NOTE: Check your rule book for specific mounting requirements</i>

Phone: 203.453.5200 Fax: 203.453.6906