



Competition Engineering offers solid aluminum replacement bushings for stock factory bushings that improve chassis/suspension control. By swapping solid bushings for the stock pieces, you increase vehicle reaction in both acceleration and cornering, as well as improve overall feel. Ride quality will be sacrificed due to the elimination of the factory bushing deflection.

## SOLID ALUMINUM BODY MOUNTS

**Fits:** 1967-81 Camaro, Firebird, 1968-79 Nova; 1971-77 Ventura, Apollo, Omega

- Replacement for the factory subframe bushings
- Eliminates deflection and twisting commonly found on GM unibody equipped vehicles
- CNC machined from 6061-T6 aluminum for a perfect fit and black anodized to eliminate corrosion
- Complete set of six for one car with complete instructions

**PART #** DESCRIPTION

**C3027** Body Mounts, Solid Aluminum



**No. C3027**

## GM A&G BODY REAR CONTROL ARM BUSHINGS

**Fits:** 1982-00 Camaro, Firebird; 1964-88 Chevelle, Malibu; 1964-77 Skylark, Gran Sport; 1964-77 LeMans, GTO, Tempest; 1966-77 Cutlass 442; 1966-70 Pontiac full-size; 1964-70 Olds full-size

- Eliminates the twist and play found in the factory rear control arms
- CNC machined from 6061-T6 aluminum and black anodized for corrosion resistance
- Designed to replace the stock bushings on the lower control arms only
- Four to a package

**PART #** DESCRIPTION

**C3165** Arm Bushings, GM A&G Body Rear Control



**No. C3165**

## ALUMINUM SPRING EYE BUSHINGS

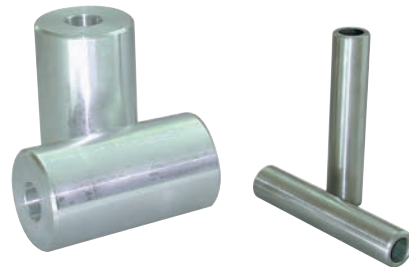
**Fits:** 1967-81 Camaro, 1968-79 Nova

- Solid Aluminum Bushings replace stock bushings and provide positive housing positioning, eliminating wheel-hop and excessive pinion angle
- Eliminates the deflection of stock bushings
- Packaged in pairs

**PART #** DESCRIPTION

**C2022** Spring Eye Bushings, Aluminum, Front, 2" O.D. x 3-5/8" long for 1/2" bolt

**C2023** Spring Eye Bushings, Aluminum, Rear, 1-5/8" O.D. x 3-1/4" long for 9/16" bolt



**No. C2022**